

# Eclipse RatioMatic Burners

Model RM400

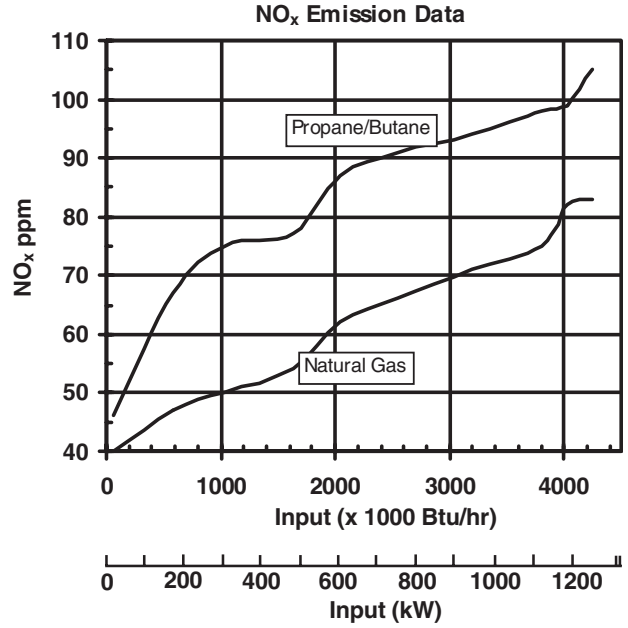
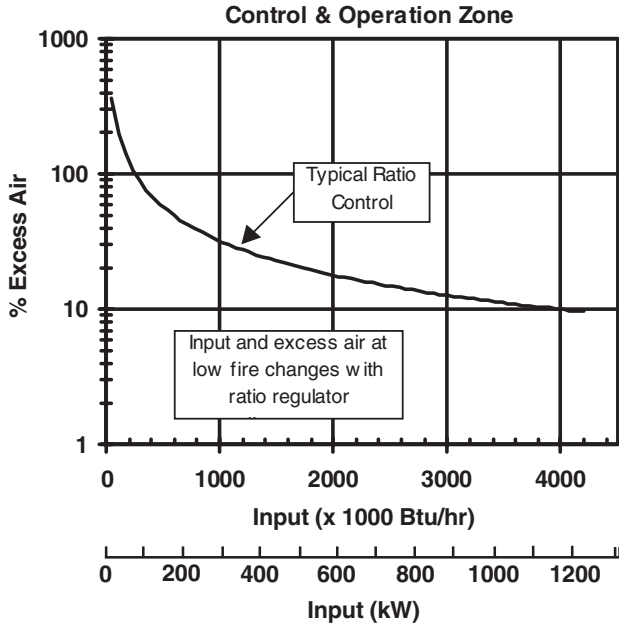
Version 3

## Main Specifications - RM400

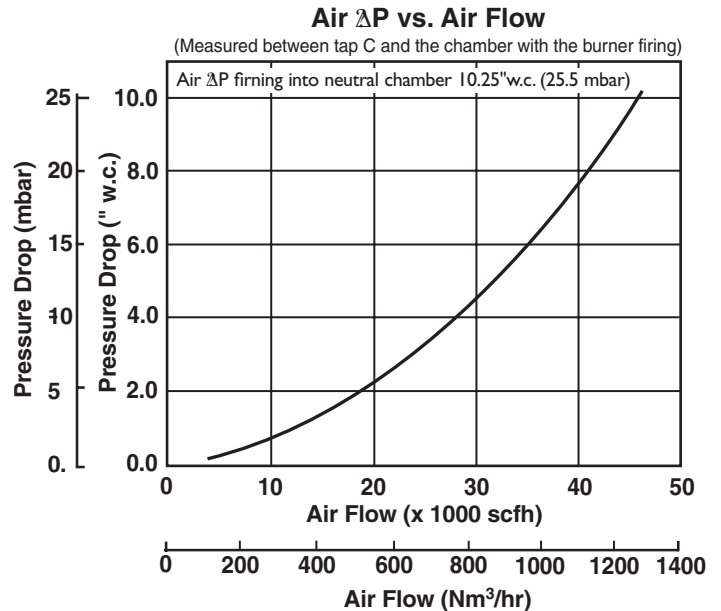
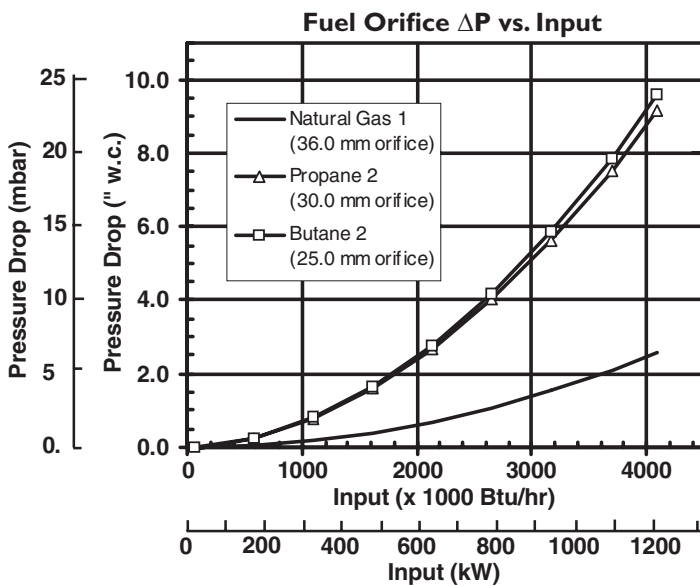
PARAMETER		SPECIFICATIONS			
		English		Metric	
		Capacity @ Chamber Pressure			
		BTU/hr	@ "w.c.	kW	@ mbar
Maximum input	60 Hz packaged blower	4,600,000	-4.0	1360	-10,0
		4,380,000	-2.0	1280	-5,0
		4,100,000	0.0	1200	0,0
		3,800,000	2.0	1110	5,0
		3,230,000	5.0	940	12,4
	50 Hz packaged blower	4,500,000	-4.0	1310	-10,0
		4,280,000	-2.0	1250	-5,0
		4,000,000	0.0	1170	0,0
		3,700,000	2.0	1080	5,0
		3,130,000	5.0	910	12,4
Note: Contact factory for varying chamber pressures or pressures outside the range: -4.0 to 5.0" w.c. (-10,0 to 12,4 mbar)					
Minimum input		BTU/hr		kW	
		65,000		19	
Main gas inlet pressure • fuel pressure at ratio regulator inlet		"w.c.		mbar	
Natural gas		20 to 55		50 to 140	
Propane or Butane		20 to 35		50 to 90	
High fire flame length • measured from the outlet end of the combustor		inches		mm	
Natural gas		65 in		1650 mm	
Propane or Butane		70 in		1800 mm	
Maximum chamber temperature		°F		°C	
Alloy tube		1500		815	
Block & Holder		1900		1040	
Flame detection		Alloy tube Block & Holder			
		Flame rod or UV scanner UV scanner only			
Fuel		Natural Gas, Propane or Butane. For any other mixed gas, contact Eclipse for orifice sizing			

- All information is based on laboratory testing. Different chamber size and conditions will affect the data.
- Maximum inputs are given for the standard combustion air blower without an air filter.
- All inputs based upon gross calorific values and standard conditions; 1 atmosphere, 70° F ( 21°C).
- Eclipse reserves the right to change the construction and/or configuration of our products at any time without being obliged to adjust earlier supplies accordingly.

## Performance Graphs RatioMatic RM400



Notes on emission data	
<p><b>NO<sub>x</sub> emission data is given for:</b></p> <ul style="list-style-type: none"> <li>• Ambient combustion air ~70° F (20° C)</li> <li>• Less than 1000°F (540°C) firing chamber</li> <li>• Minimal process air velocity</li> <li>• Low fire input adjusted to 65,000 BTU/hr (19kW)</li> <li>• ppm volume dry at 3% O<sub>2</sub></li> <li>• Neutral chamber pressure</li> </ul>	<p><b>Emissions are influenced by:</b></p> <ul style="list-style-type: none"> <li>• Chamber conditions</li> <li>• Fuel type</li> <li>• Firing rate</li> <li>• Ratio regulator adjustment</li> <li>• Combustion air temperature</li> </ul>
<p><b>CO emission is largely influenced by chamber conditions. Contact your local Eclipse Combustion representative for an estimate of CO emission on your application.</b></p>	

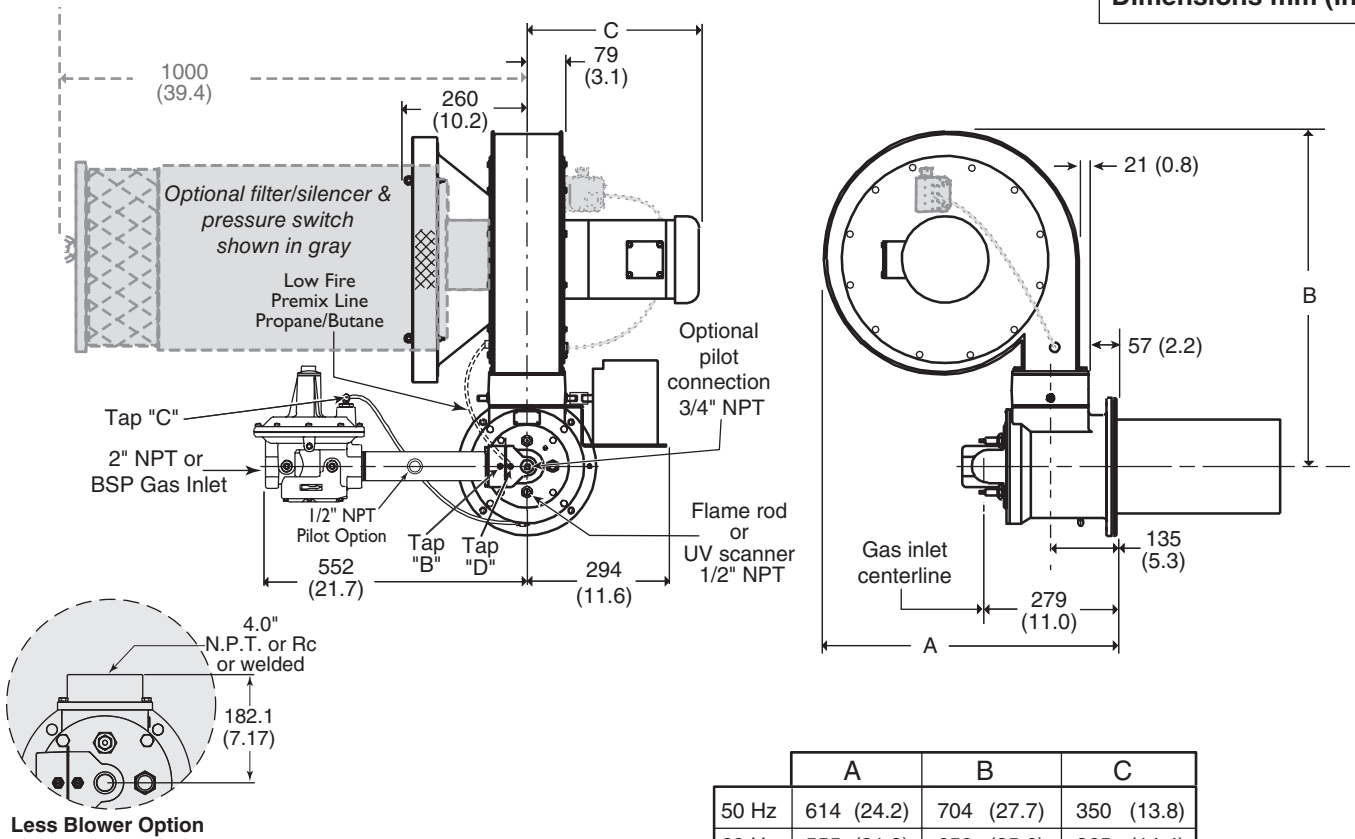


<sup>1</sup> Natural gas ΔP measured between taps B and D

<sup>2</sup> Propane or Butane ΔP measured between tap B and chamber

# Dimensions-RM400

Dimensions mm (in)



Weights	
Packaged Burner	70 kg (155 lb.)
Filter Silencer	24 kg (52 lb.)

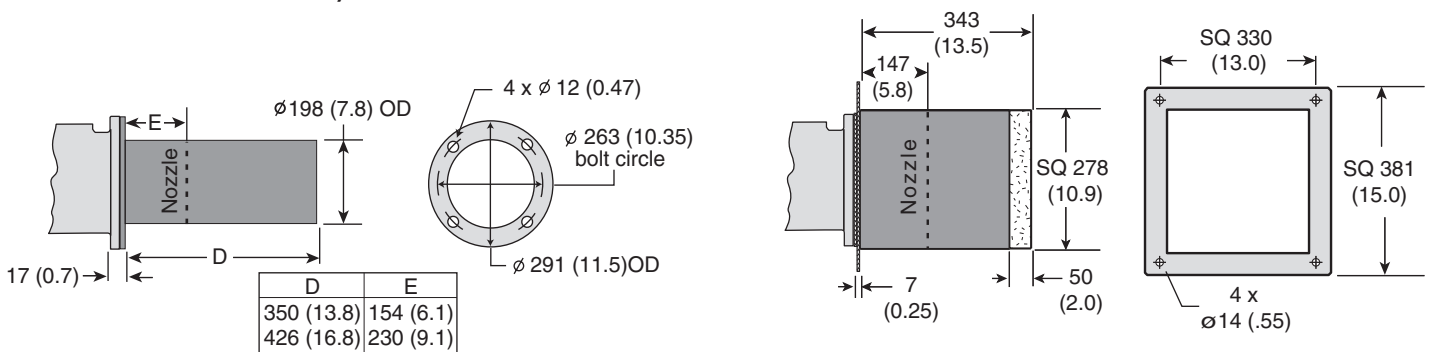
	A	B	C
50 Hz	614 (24.2)	704 (27.7)	350 (13.8)
60 Hz	555 (21.8)	650 (25.6)	365 (14.4)
60 Hz (Auto)	555 (21.8)	650 (25.6)	407 (16.0)

Note: See Price List 110 for available spare parts.

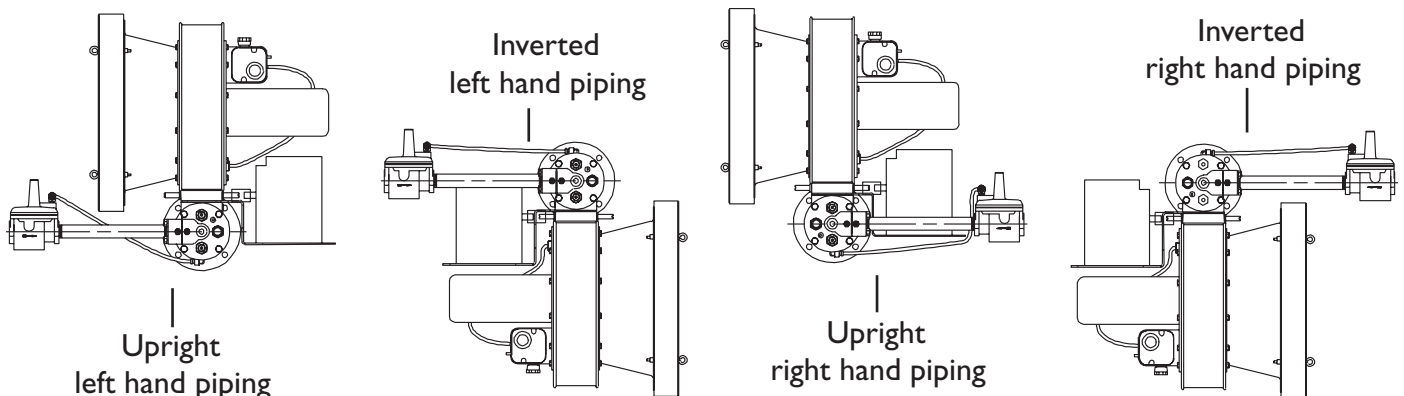
## Combustor types

Alloy tube

Block & Holder



## Burner configuration





**Offered By:**

Power Equipment Company  
2011 Williamsburg Road  
Richmond, Virginia 23231  
Phone (804) 236-3800  
Fax (804) 236-3882

---

[www.peconet.com](http://www.peconet.com)